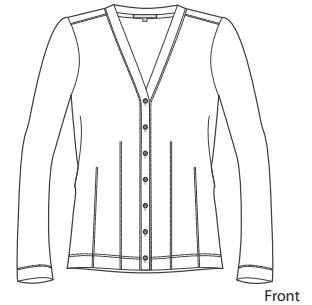
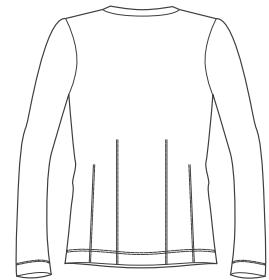


# Port Authority® - Ladies Cardigan

PORT AUTHORITY®



Front



Back

L515

- \* 6.6-ounce, 96/4 cotton/spandex stretch fabric
- \* 1x1 rib knit construction
- \* Gently contoured silhouette
- \* 7-button cardigan placket with dyed-to-match buttons

Care Instructions:  
Machine wash cold  
Wash with like colors  
Do not bleach  
Tumble dry low  
Warm iron if necessary

## Finished Measurements in Inches

Size	XS	S	M	L	XL	XXL	Plus 1X	Plus 2X
Chest	16 1/2	18	19 1/2	21	22 1/2	24	26	28
Shirt	25 1/2	26	26 1/2	27	27 1/2	28	28 1/2	29
Sleeve	31 1/2	32 1/4	33	33 3/4	34 1/2	35 1/4	35 3/4	36 1/4
Collar	7 1/4	7 1/2	7 3/4	8	8 1/4	8 1/2	8 3/4	9

Collar measured from HPS to HPS

## Colors

	Black
	White
	Sapphire Blue
	Scarlet Red
	Dark Chocolate Brown
	Moonlight Blue

Please Note:  
Colors shown are approximate and for reference only. For closest match see PMS colors, or for exact match, returnable samples and grommeted samples are available.

## Color Chart

Colors	Black	White	Sapphire Blue	Scarlet Red	Dark Chocolate Brown	Moonlight Blue
Textile PMS	No Match	No Match	No Match	No Match	No Match	No Match
General PMS	ProBlk C	663 C	5265 C	186 C	4975 C	653 C